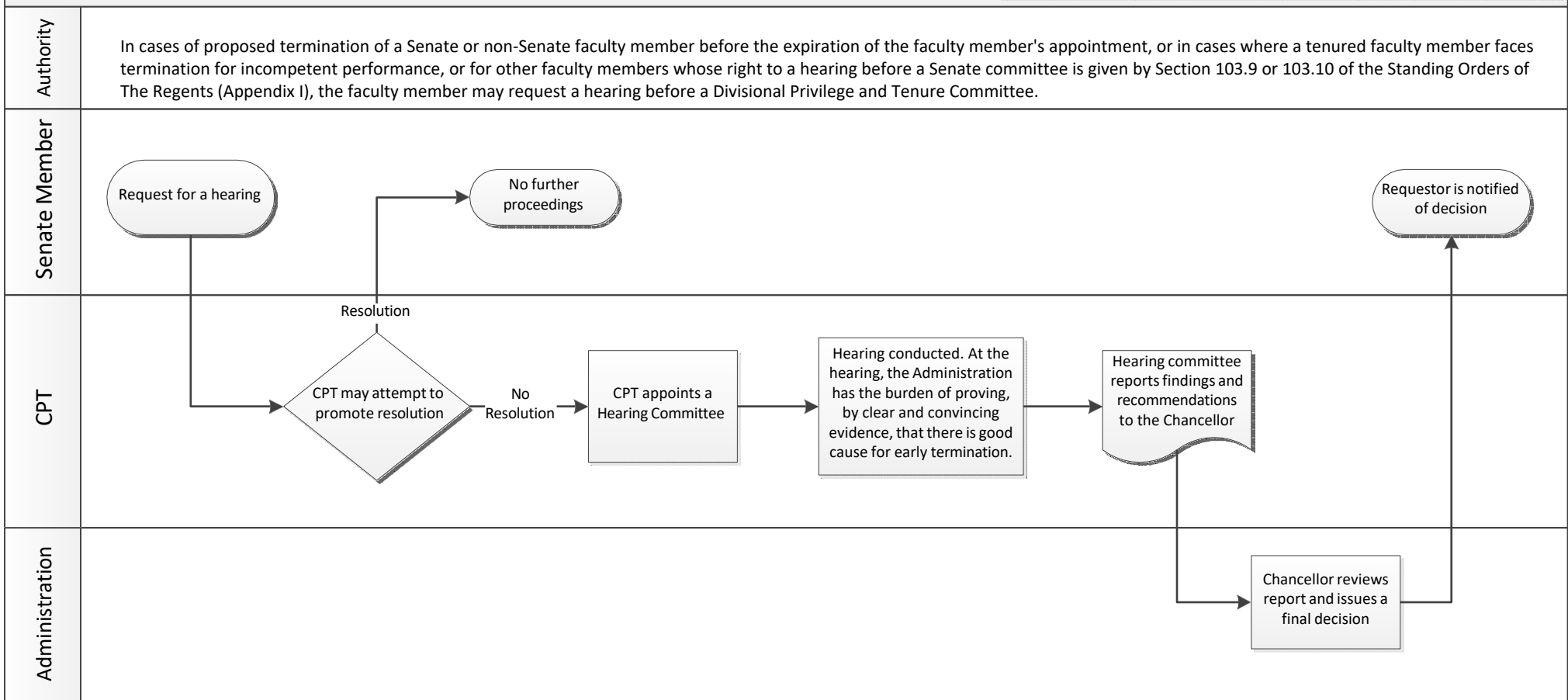


Committee on Privilege and Tenure (CPT)

Flowchart Shapes Key



Process for Early Termination Cases



San Diego Division Senate Bylaw 230 (<http://senate.ucsd.edu/Operating-Procedures/Senate-Manual/Bylaws/230>)

University of California Academic Senate Bylaw 334 (<https://senate.universityofcalifornia.edu/bylaws-regulations/bylaws/blpart3.html#bl334>)

University of California Academic Senate Bylaw 337 (<https://senate.universityofcalifornia.edu/bylaws-regulations/bylaws/blpart3.html#bl337>)