

# **Degrees Conferred**

Profile of Degree Recipients

# 2011 - 2012



**University of California, San Diego**  
**Office of Student Research & Information**  
**Student Affairs**  
**[studentresearch.ucsd.edu](http://studentresearch.ucsd.edu)**

# **DEGREES CONFERRED**

## **Profile of Degree Recipients**

**2011- 2012**

## **University of California, San Diego**

**William B. Armstrong, Ph.D.**  
Director

**Heidi M. Carty, Ph.D.**  
Principal Research Analyst

**Greg Martin**  
Programmer Analyst

**Jason R. Thornton**  
Research Analyst

**Student Research & Information**  
**Student Affairs**  
University of California, San Diego  
La Jolla, CA 92093-0088  
<http://studentresearch.ucsd.edu>

# Highlights

---

- UC San Diego awarded a combined total of 8,391 undergraduate, graduate and Medical degrees during the 2011/2012 academic year. A record high number of Bachelor's degrees (N=6,335), Master's degrees (N=1,106) and Ph.D.'s (N=64) were awarded in 2011/2012.
- The majority (52%) of undergraduate and graduate Pharmaceutical degrees (72%) were awarded to females, while the majority of Master's degrees (57%) and Ph.D.s (58%) were awarded to males.
- UCSD awarded 6,335 undergraduate degrees in 2011/2012. Of these, the largest percentage (48%; 3,034) were granted to social science majors, followed by biology majors (23%; 1,478).
- Approximately, 57% of the undergraduate degrees awarded in 2011/2012 were earned by students of color.
- More than one-half (55%) of all first-time freshmen who earned a Bachelor's degree at UCSD did so in four years; almost three-quarters (74%) graduated within 13 quarters or just over four years.
- On average, transfer students took three years to complete their Bachelor degree requirements at UCSD, over three-quarters (80%) graduated within nine quarters.
- Approximately 64% of the 2011/2012 undergraduate degree recipients graduated with a grade point average of 3.0 ('B') or higher; approximately one in four (24%) graduated with a grade point average of 3.5 ('B+') or higher.
- The average GPA for all undergraduate degree recipients in 2011/2012 was 3.15. The average GPA for the 2011/2012 first-time freshmen graduates was 3.19. The average GPA for the 2011/2012 transfer students was 3.08.

# All Degree Types

## 2011 / 2012

**UC San Diego Awarded a Total of 8,391 Undergraduate, Graduate and Medical Degrees During the 2011/2012 Academic Year.**

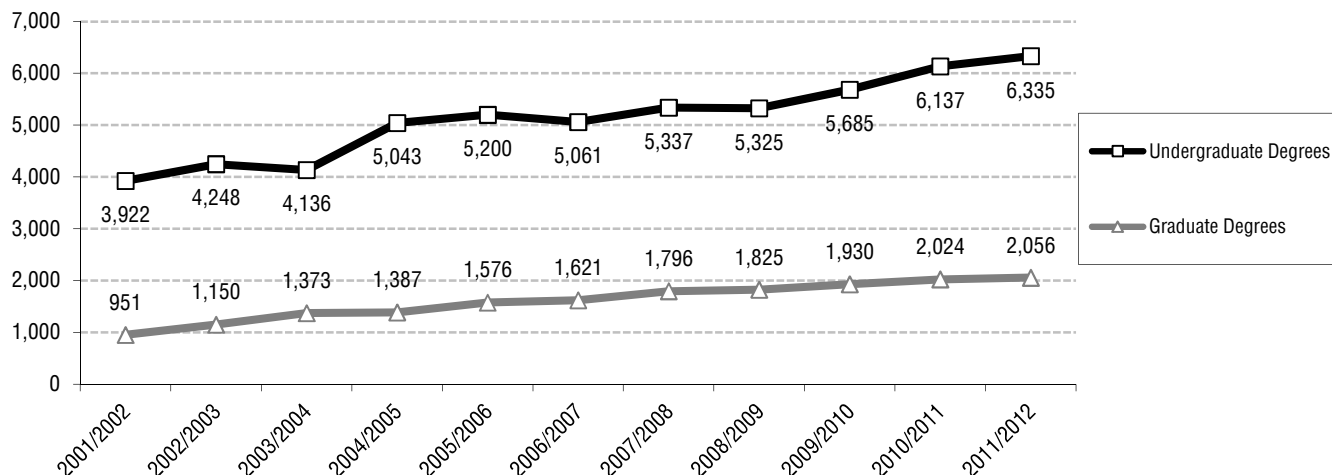
## Degrees by the Numbers



Award Year	Bachelor	Master	Candidate in Phil.	Doctor of Philosophy	Doctor of Medicine	Doctor of Pharmacy	Total
2011/2012	6,335	1,106	233	528	125	64	8,391
2010/2011	6,137	1,071	276	491	129	57	8,161
2009/2010	5,685	1,033	262	459	122	54	7,615
2008/2009	5,325	990	234	437	109	55	7,150
2007/2008	5,337	894	258	488	125	31	7,133
2006/2007	5,061	901	185	387	101	47	6,682
2005/2006	5,200	761	253	354	186	22	6,776
2004/2005	5,043	797	170	303	117	--	6,430
2003/2004	4,136	785	161	327	100	--	5,509
2002/2003	4,248	573	170	279	128	--	5,398
2001/2002	3,922	495	117	278	61	--	4,873

8,391 students graduated from UCSD in 2011/2012. A record high (N=1,106) number of Master's, Ph.D.'s (N=528) and Bachelor's (N=6,335) degrees were awarded in 2011/2012.

**Trends in Degrees Awarded**





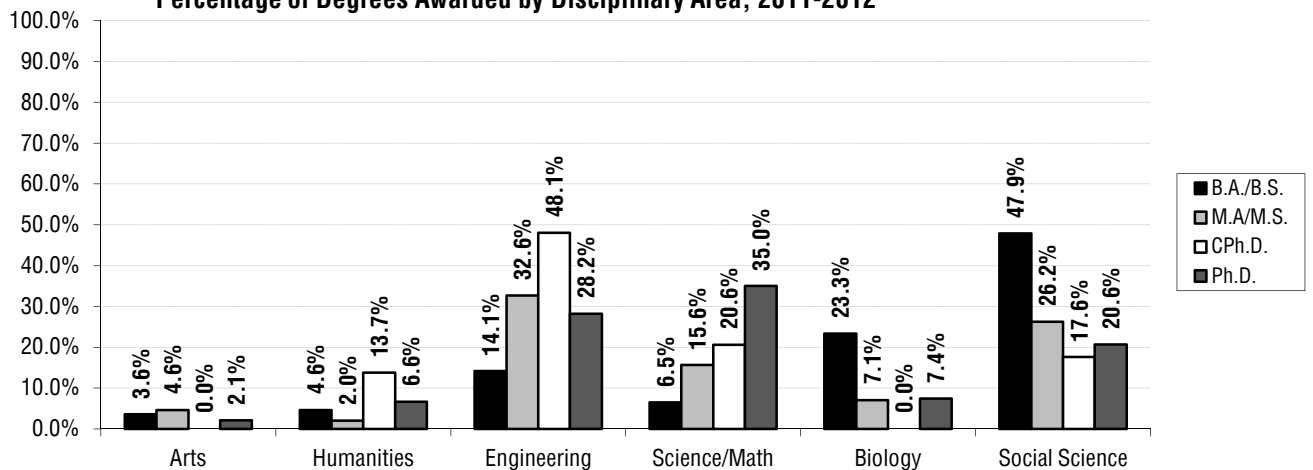
# Student Characteristics: All Degree Types 2011/2012

The majority (52%) of Bachelor's degrees were awarded to females.

Most popular major by degree type: Almost one-half (48%) of all Bachelor's degrees were awarded to engineering majors. Approximately, 26% of all Master's degrees were awarded to engineering majors. The largest number (35%) of degree recipients earning a Ph.D. were science/math majors.

Background Characteristics	B.A./B.S. N=6,335		M.A./M.S. N=1,106		CPh.D. N=233		Ph.D. N=528		M.D. N=125		Pharm. N=64		Total N=8,391	
	N	%	N	%	N	%	N	%	N	%	N	%	N	%
<b>Gender</b>														
Female	3,310	52.2%	475	42.9%	67	28.8%	221	41.9%	62	49.6%	46	71.9%	4,181	49.8%
Male	3,025	47.8%	631	57.1%	166	71.2%	307	58.1%	63	50.4%	18	28.1%	4,210	50.2%
<b>Ethnicity</b>														
African Am.	110	1.7%	20	1.8%	0	0.0%	5	0.9%	0	0.0%	1	1.6%	136	1.6%
Asian	2,570	40.6%	183	16.5%	15	6.4%	54	10.2%	35	28.0%	32	50.0%	2,889	34.4%
Mexican Am.	546	8.6%	46	4.2%	8	3.4%	22	4.2%	6	4.8%	2	3.1%	630	7.5%
Filipino	229	3.6%	20	1.8%	2	0.9%	2	0.4%	2	1.6%	0	0.0%	255	3.0%
Latino	147	2.3%	41	3.7%	2	0.9%	20	3.8%	1	0.8%	0	0.0%	211	2.5%
Native Am.	25	0.4%	15	1.4%	0	0.0%	3	0.6%	2	1.6%	0	0.0%	45	0.5%
Caucasian	1,510	23.8%	374	33.8%	99	42.5%	274	51.9%	56	44.8%	20	31.3%	2,333	27.8%
Other	1,198	18.9%	407	36.8%	107	45.9%	148	28.0%	23	18.4%	9	14.1%	1,892	22.5%
<b>Disciplinary Area</b>														
Arts	225	3.6%	51	4.6%	0	0.0%	11	2.1%	0	0.0%	0	0.0%	287	3.4%
Humanities	292	4.6%	22	2.0%	32	13.7%	35	6.6%	0	0.0%	0	0.0%	381	4.5%
Engineering	896	14.1%	361	32.6%	112	48.1%	149	28.2%	0	0.0%	0	0.0%	1,518	18.1%
Science/Math	409	6.5%	173	15.6%	48	20.6%	185	35.0%	125	100.0%	64	100.0%	1,004	12.0%
Biology	1,478	23.3%	78	7.1%	0	0.0%	39	7.4%	0	0.0%	0	0.0%	1,595	19.0%
Social Science	3,034	47.9%	290	26.2%	41	17.6%	109	20.6%	0	0.0%	0	0.0%	3,474	41.4%
DbI/Special	1	0.0%	0	0.0%	0	0.0%	0	0.0%	0	0.0%	0	0.0%	1	0.0%
Management	0	0.0%	131	11.8%	0	0.0%	0	0.0%	0	0.0%	0	0.0%	131	1.6%
<b>College</b>														
Revelle	944	14.9%	NA	NA	NA	NA	NA	NA	NA	NA	NA	NA	NA	NA
John Muir	1,151	18.2%	NA	NA	NA	NA	NA	NA	NA	NA	NA	NA	NA	NA
Thurgood Marshall	1,251	19.7%	NA	NA	NA	NA	NA	NA	NA	NA	NA	NA	NA	NA
Earl Warren	1,033	16.3%	NA	NA	NA	NA	NA	NA	NA	NA	NA	NA	NA	NA
Eleanor Roosevelt	1,038	16.4%	NA	NA	NA	NA	NA	NA	NA	NA	NA	NA	NA	NA
Sixth	918	14.5%	NA	NA	NA	NA	NA	NA	NA	NA	NA	NA	NA	NA

**Percentage of Degrees Awarded by Disciplinary Area, 2011-2012**

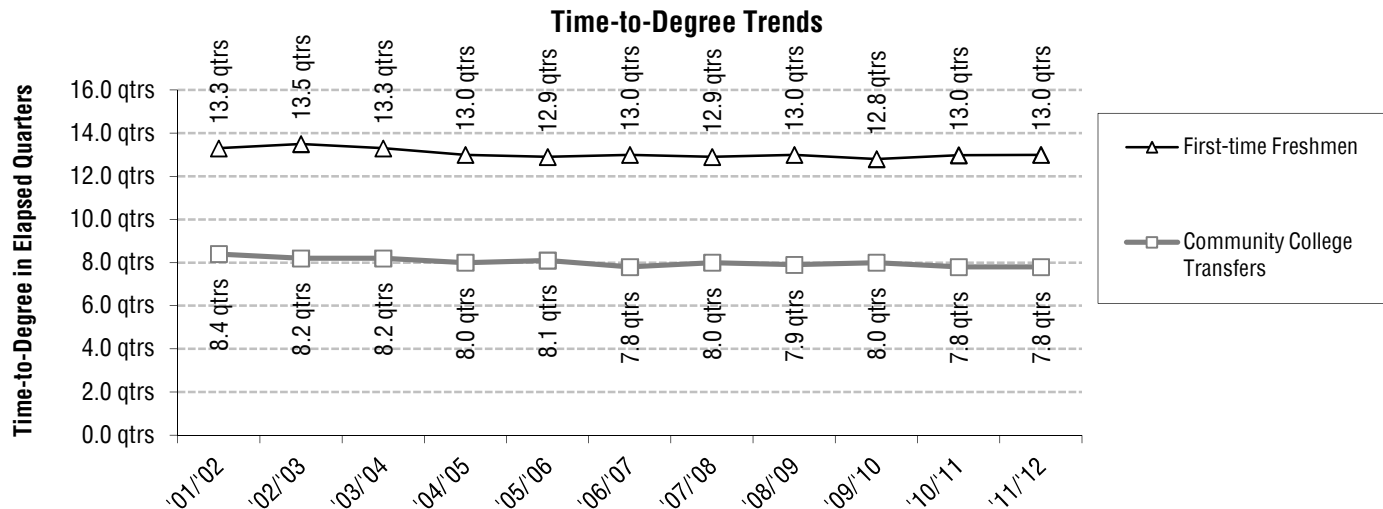


# Bachelor Degrees

## Trends in Time-to-Degree<sup>1</sup>: Academic Performance

Academic Performance	Award Year										
	'01/'02	'02/'03	'03/'04	'04/'05	'05/'06	'06/'07	'07/'08	'08/'09	'09/'10	'10/'11	'11/'12
<b>Bachelor Degree Recipients Who Entered From High School</b>											
Average Time-to-Degree	13.3	13.5	13.3	13.0	12.9	13.0	12.9	13.0	12.8	13.0	13.0
Median Time-to-Degree	12.0	12.0	12.0	12.0	12.0	12.0	12.0	12.0	12.0	12.0	12.0
Average Units	205	207	209	210	211	213	213	213	215	217	218
GPA at Graduation	3.14	3.16	3.19	3.19	3.20	3.17	3.18	3.16	3.20	3.19	3.19
% with GPA = 3.0 - 3.5	45%	43%	43%	44%	43%	43%	43%	42%	44%	43%	41%
% with GPA ≥ 3.5	20%	23%	25%	26%	26%	25%	25%	24%	27%	26%	27%
<b>Bachelor Degree Recipients Who Entered From a Two-Year Community College</b>											
Average Time-to-Degree	8.4	8.2	8.2	8.0	8.1	7.8	8.0	7.9	8.0	7.8	7.8
Median Time-to-Degree	7.0	6.0	6.0	6.0	6.0	6.0	6.0	6.0	7.0	7.0	7.0
Average Units	205	206	205	206	206	205	206	207	206	206	206
GPA at Graduation	3.03	3.04	3.06	3.04	3.06	3.06	3.04	3.03	3.04	3.07	3.08
% with GPA = 3.0 - 3.5	40%	36%	37%	39%	36%	37%	37%	36%	34%	38%	36%
% with GPA ≥ 3.5	15%	17%	20%	17%	19%	19%	18%	18%	19%	20%	21%
<b>Total Bachelor Degree Recipients</b>											
Average Units	205	207	208	209	210	210	211	211	212	213	214
GPA at Graduation	3.11	3.12	3.15	3.14	3.16	3.14	3.14	3.12	3.15	3.15	3.15
% with GPA = 3.0 - 3.5	43%	41%	41%	42%	41%	41%	41%	40%	41%	41%	40%
% with GPA ≥ 3.5	19%	21%	23%	23%	24%	23%	23%	22%	24%	23%	24%

<sup>1</sup>Time-to-Degree is reported in elapsed quarters from first enrollment date to graduation. Only the records of students who enter UCSD in the Fall quarter are included in time-to-degree calculations. An academic year is defined as three quarters; twelve quarters equal four years. Summer degrees are combined with fall degrees and represent one quarter.



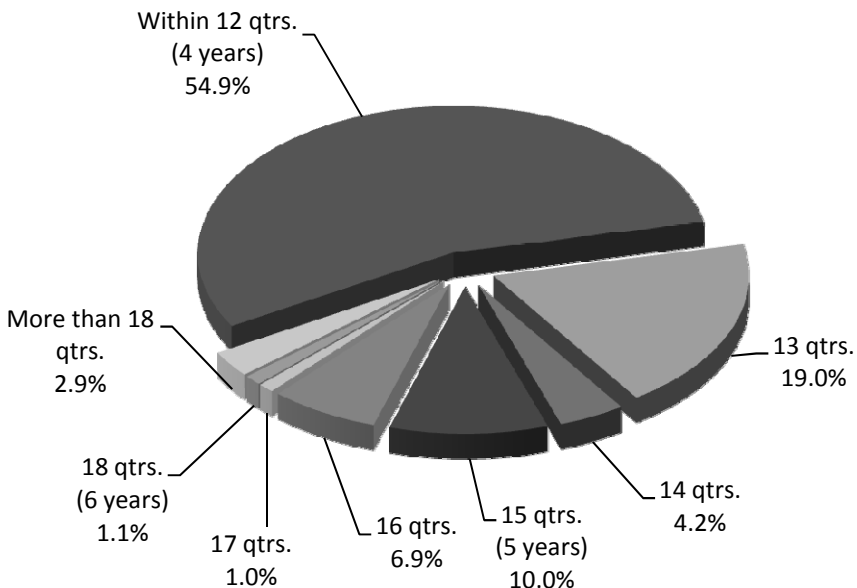
# Nominal Time-to-Degree: 2011/2012

The average first-time freshman takes 4.3 years to graduate. Fifty-five percent of first-time freshmen earning a Bachelor's degree at UCSD did so within 4 years; almost three-quarters (74%) graduated within 13 quarters or just over 4 years, 88% within 5 years, and 97% within 6 years (18 quarters).

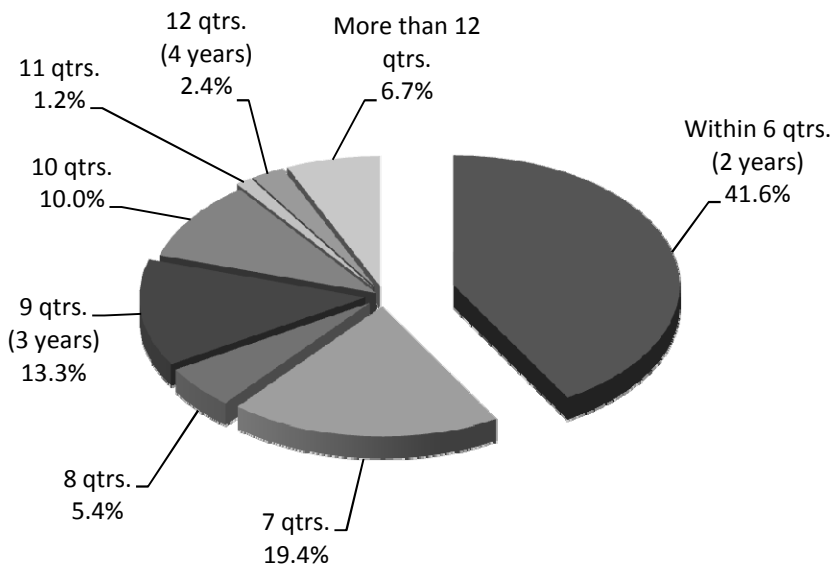
## First-Time Freshmen

### Cumulative Frequency:

54.9% graduated within 12 qtrs.  
 73.9% graduated within 13 qtrs.  
 78.2% graduated within 14 qtrs.  
 88.1% graduated within 15 qtrs.  
 95.0% graduated within 16 qtrs.  
 96.0% graduated within 17 qtrs.  
 97.1% graduated within 18 qtrs.



On average, transfer students took 2.6 years to complete their bachelor degree requirements at UCSD. Over three-quarters (80%) graduated within 3 years (9 quarters), and almost one-third (42%) graduated within 2 years (6 quarters).



## Community College Transfer

### Cumulative Frequency:

41.6% graduated within 6 qtrs.  
 61.0% graduated within 7 qtrs.  
 66.4% graduated within 8 qtrs.  
 79.7% graduated within 9 qtrs.  
 89.7% graduated within 10 qtrs.  
 90.9% graduated within 11 qtrs.  
 93.3% graduated within 12 qtrs.



# Characteristics of Bachelor Degree Recipients: 2011/2012

Student Characteristics	N	%	GPA Mean	Academic Profile		Units Mean	Time-to-Degree	
				% GPA 3.0 - 3.5	% GPA ≥ 3.5		Freshmen Mean	C.C. Transfer <sup>2</sup> Mean
<b>Gender</b>								
Female	3,310	52.2%	3.17	41.4%	25.4%	211	12.7	7.5
Male	3,025	47.8%	3.12	37.8%	23.4%	216	13.4	8.1
<b>Ethnicity</b>								
African Am.	110	1.7%	3.00	40.0%	11.8%	211	13.6	7.9
Asian	2,570	40.6%	3.09	40.7%	19.1%	214	13.1	7.6
Mexican Am.	546	8.6%	3.00	35.5%	14.1%	209	13.9	8.0
Filipino	229	3.6%	3.00	34.1%	14.4%	212	13.2	8.3
Latino	147	2.3%	3.08	42.2%	15.0%	210	13.0	8.3
Native Am.	25	0.4%	3.26	40.0%	28.0%	195	11.8	7.3
Caucasian	1,510	23.8%	3.22	41.8%	29.2%	210	12.7	7.8
Other	1,198	18.9%	3.30	37.5%	38.8%	221	12.7	8.0
<b>Disciplinary Area</b>								
Arts	225	3.6%	3.34	43.1%	36.9%	214	13.1	7.9
Humanities	292	4.6%	3.23	39.7%	31.2%	210	13.1	8.5
Engineering	896	14.1%	3.14	39.3%	23.2%	236	13.6	9.5
Science/Math	409	6.5%	3.14	39.9%	23.0%	225	13.2	8.6
Biology	1,478	23.3%	3.15	38.8%	24.6%	218	12.9	8.3
Social Science	3,034	47.9%	3.13	40.0%	23.3%	204	12.9	7.1
DbI/Special	1	0.0%	3.52	0.0%	100.0%	203	13.0	--
<b>College</b>								
Revelle	944	14.9%	3.07	36.7%	19.6%	222	13.2	9.2
Muir	1,151	18.2%	3.20	38.7%	29.0%	213	12.8	7.5
Marshall	1,251	19.7%	3.16	40.9%	24.9%	207	12.8	7.3
Warren	1,033	16.3%	3.14	41.5%	23.0%	214	12.9	7.9
Roosevelt	1,038	16.4%	3.17	38.2%	27.6%	214	13.0	8.0
Sixth	918	14.5%	3.13	42.0%	21.0%	214	13.4	7.5
<b>School Type</b>								
High School	3,905	61.6%	3.19	41.1%	26.8%	218	13.0	--
2yr College	2,297	36.3%	3.08	36.2%	20.6%	206	--	7.8
4yr College/Univ.	124	2.0%	3.26	60.5%	21.0%	217	--	--
Unknown	9	0.1%	2.92	22.2%	11.1%	199	--	--
<b>First Generation College Status</b>								
First Generation	1,948	30.7%	3.06	38.5%	18.0%	212	13.3	7.9
Not First Generation	4,387	69.3%	3.19	40.2%	27.3%	214	12.9	7.7
<b>Income</b>								
High: > \$98,401	1,551	24.5%	3.23	39.0%	31.5%	213	12.5	7.5
Medium High: \$65,601 - \$98,400	654	10.3%	3.14	39.4%	23.9%	215	12.8	7.9
Medium Low: \$32,801 - \$65,600	1,172	18.5%	3.09	42.0%	18.9%	214	13.2	7.9
Low: < \$32,800	1,343	21.2%	3.05	38.3%	17.3%	214	13.5	8.1
Missing/Undeclared	1,615	25.5%	3.19	39.9%	27.9%	213	12.9	7.7
<b>Total Population</b>	6,335	100.0%	3.15	39.7%	24.4%	214	13.0	7.8

The majority of Bachelor degree recipients are women (52%).

Social science majors account for almost one-half (48%) of the 2011/2012 undergraduate degree recipients.

Approximately, 64% of the undergraduate degree recipients graduated with GPA of 3.0 ('B') or higher. Approximately, 24% graduated with a GPA of 'B+' or higher.

<sup>2</sup> For Transfer students, time-to-degree is calculated only for those students who matriculate from a two-year community college (C.C.). The typical community college transfer student enters UCSD with 90 units of transferable academic credit.

On average, first-time freshmen take just over four years (13.0 quarters) to graduate. Community College transfer students tend to graduate in approximately three years or 8 quarters.



## Profile of Bachelor Degree Recipients Majoring in the Arts: 2011/2012



The majority (57%) of the students graduating with a degree in arts were female.

Sixth College awarded the largest number of Bachelor's degrees in arts compared to the other five colleges.

Relative to other disciplinary areas, a larger percentage (80%) of arts majors graduated with a GPA of 'B' or higher. The average GPA for arts majors was 3.34, respectively.

Student Characteristics	N	%	Academic Profile				Time-to-Degree	
			GPA Mean	% GPA 3.0 - 3.5	% GPA ≥ 3.5	Units Mean	Freshmen Mean	C.C. Transfer Mean
<b>Gender</b>								
Female	129	57.3%	3.39	41.1%	43.4%	214	12.8	8.0
Male	96	42.7%	3.27	45.8%	28.1%	215	13.7	7.7
<b>Ethnicity</b>								
African Am.	3	1.3%	2.88	0.0%	0.0%	203	16.5	6.0
Asian	73	32.4%	3.25	49.3%	26.0%	212	13.0	8.9
Mexican Am.	26	11.6%	3.31	46.2%	30.8%	225	13.8	9.0
Filipino	9	4.0%	3.35	44.4%	44.4%	221	13.8	8.0
Latino	1	0.4%	3.05	100.0%	0.0%	234	--	10.0
Native Am.	1	0.4%	4.00	0.0%	100.0%	237	--	7.0
Caucasian	91	40.4%	3.43	39.6%	47.3%	212	12.8	7.4
Other	21	9.3%	3.35	38.1%	38.1%	216	13.3	6.9
<b>College</b>								
Revelle	15	6.7%	3.17	6.7%	33.3%	236	13.2	9.2
Muir	47	20.9%	3.37	57.4%	27.7%	215	13.0	7.6
Marshall	29	12.9%	3.34	41.4%	37.9%	209	12.3	7.4
Warren	20	8.9%	3.22	45.0%	25.0%	204	13.9	7.7
Roosevelt	34	15.1%	3.31	44.1%	38.2%	220	12.8	9.6
Sixth	80	35.6%	3.39	41.3%	45.0%	212	13.5	7.3
<b>School Type</b>								
High School	118	52.4%	3.31	39.8%	37.3%	218	13.1	--
2yr College	106	47.1%	3.37	46.2%	36.8%	210	--	7.9
4yr College/Univ.	1	0.4%	3.24	100.0%	0.0%	197	--	--
Unknown	0	0.0%	--	--	--	--	--	--
<b>First Generation College Status</b>								
First Generation	68	30.2%	3.29	47.1%	29.4%	216	13.7	8.1
Not First Generation	157	69.8%	3.36	41.4%	40.1%	213	12.9	7.8
<b>Income</b>								
High: > \$98,401	50	22.2%	3.41	38.0%	46.0%	213	12.5	7.3
Medium High: \$65,601 - \$98,400	16	7.1%	3.41	25.0%	56.3%	219	13.6	7.7
Medium Low: \$32,801 - \$65,600	42	18.7%	3.31	42.9%	33.3%	218	12.8	7.9
Low: < \$32,800	43	19.1%	3.25	53.5%	23.3%	211	13.4	8.0
Missing/Undeclared	74	32.9%	3.34	44.6%	36.5%	214	13.6	8.1
<b>Total Arts</b>	225	100.0%	3.34	43.1%	36.9%	214	13.1	7.9

\* Five or fewer cases.

## Bachelor Degrees in the Arts: Trends Profile - 2001/2002 to 2010/2011

Student Characteristics	N	%	Academic Profile				Time-to-Degree	
			GPA Mean	% GPA 3.0 - 3.5	% GPA ≥ 3.5	Units Mean	Freshmen Mean	C.C. Transfer Mean
<b>Award Year</b>								
2010/2011	256	100.0%	3.39	46%	42%	215	13.3	8.5
2009/2010	219	100.0%	3.39	48%	38%	213	13.1	8.4
2008/2009	249	100.0%	3.31	48%	34%	210	13.6	8.1
2007/2008	232	100.0%	3.35	47%	37%	213	13.8	8.5
2006/2007	257	100.0%	3.35	51%	34%	211	13.9	8.3
2005/2006	280	100.0%	3.36	49%	38%	208	13.4	8.2
2004/2005	296	100.0%	3.29	52%	30%	208	13.4	8.1
2003/2004	281	100.0%	3.34	44%	38%	211	13.8	8.0
2002/2003	300	100.0%	3.27	52%	26%	207	13.9	8.1
2001/2002	236	100.0%	3.25	52%	25%	202	13.6	8.5



## Profile of Bachelor Degree Recipients Majoring in the Humanities: 2011/2012

Student Characteristics	N	%	Academic Profile				Time-to-Degree	
			GPA Mean	% GPA 3.0 - 3.5	% GPA ≥ 3.5	Units Mean	Freshmen Mean	C.C. Transfer Mean
<b>Gender</b>								
Female	172	58.9%	3.29	41.3%	35.5%	214	13.0	8.6
Male	120	41.1%	3.14	37.5%	25.0%	205	13.3	8.4
<b>Ethnicity</b>								
African Am.	5	1.7%	2.83	20.0%	20.0%	192	12.0	8.0
Asian	75	25.7%	3.27	53.3%	26.7%	217	12.8	8.4
Mexican Am.	39	13.4%	3.10	28.2%	28.2%	202	13.8	9.7
Filipino	8	2.7%	3.35	37.5%	50.0%	220	12.9	7.0
Latino	12	4.1%	2.91	25.0%	16.7%	198	13.6	14.7
Native Am.	1	0.3%	3.47	100.0%	0.0%	180	--	5.0
Caucasian	108	37.0%	3.28	38.9%	32.4%	207	13.1	7.8
Other	44	15.1%	3.26	34.1%	40.9%	216	12.6	8.9
<b>College</b>								
Revelle	23	7.9%	2.92	34.8%	13.0%	218	15.8	10.6
Muir	62	21.2%	3.26	33.9%	37.1%	205	12.1	8.0
Marshall	52	17.8%	3.26	25.0%	40.4%	203	12.4	7.7
Warren	55	18.8%	3.21	52.7%	25.5%	210	12.9	9.4
Roosevelt	73	25.0%	3.27	42.5%	32.9%	216	13.3	8.4
Sixth	27	9.2%	3.26	51.9%	22.2%	211	12.8	7.1
<b>School Type</b>								
High School	162	55.5%	3.29	37.0%	38.9%	213	13.1	--
2yr College	121	41.4%	3.13	43.8%	19.8%	206	--	8.5
4yr College/Univ.	8	2.7%	3.47	37.5%	50.0%	221	--	--
Unknown	1	0.3%	2.62	0.0%	0.0%	188	--	--
<b>First Generation College Status</b>								
First Generation	91	31.2%	3.18	31.9%	34.1%	208	13.4	8.7
Not First Generation	201	68.8%	3.25	43.3%	29.9%	211	12.9	8.4
<b>Income</b>								
High: > \$98,401	65	22.3%	3.38	43.1%	41.5%	214	12.4	7.2
Medium High: \$65,601 - \$98,400	33	11.3%	3.28	48.5%	27.3%	217	12.3	8.2
Medium Low: \$32,801 - \$65,600	53	18.2%	3.05	30.2%	24.5%	204	14.0	8.6
Low: < \$32,800	55	18.8%	3.20	38.2%	29.1%	209	13.7	8.6
Missing/Undeclared	86	29.5%	3.22	40.7%	30.2%	209	12.3	8.9
<b>Total Humanities</b>	292	100.0%	3.23	39.7%	31.2%	210	13.1	8.5

\* Five or fewer cases.

## Bachelor Degrees in the Humanities: Trends Profile - 2001/2002 to 2010/2011

Student Characteristics	N	%	Academic Profile				Time-to-Degree	
			GPA Mean	% GPA 3.0 - 3.5	% GPA ≥ 3.5	Units Mean	Freshmen Mean	C.C. Transfer Mean
<b>Award Year</b>								
2010/2011	260	100.0%	3.30	48%	31%	209	12.8	7.2
2009/2010	255	100.0%	3.25	43%	29%	207	12.7	8.3
2008/2009	260	100.0%	3.19	43%	25%	206	13.0	7.6
2007/2008	291	100.0%	3.25	45%	31%	211	12.7	8.1
2006/2007	262	100.0%	3.19	45%	24%	205	13.0	7.7
2005/2006	280	100.0%	3.25	46%	29%	204	12.8	8.2
2004/2005	259	100.0%	3.24	45%	29%	203	12.8	8.4
2003/2004	253	100.0%	3.22	47%	28%	204	13.1	7.7
2002/2003	226	100.0%	3.17	43%	24%	205	13.4	8.0
2001/2002	244	100.0%	3.16	43%	22%	203	13.7	8.3

The majority (59%) of students earning a Bachelor's degree in humanities were female.

Eleanor Roosevelt College awarded the largest number of humanities degrees followed by Muir College.

Approximately, 71% of humanities majors graduated with a GPA of 'B' or higher; the mean GPA was 3.23, respectively.



## Profile of Bachelor Degree Recipients Majoring in Engineering: 2011/2012

The majority (82%) of engineering degrees were awarded to males.

Warren College continues to award the largest proportion (26%) of Bachelor's degrees in engineering.

Approximately, 63% of engineering majors graduated with a GPA of 'B' or higher; the average GPA for graduating engineering students was 3.14, respectively.

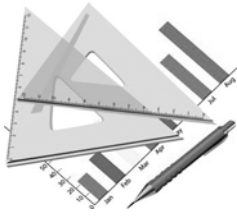
Student Characteristics	N		Academic Profile				Time-to-Degree	
	N	%	GPA Mean	% GPA 3.0 - 3.5	% GPA ≥ 3.5	Units Mean	Freshmen Mean	C.C. Transfer Mean
<b>Gender</b>								
Female	162	18.1%	3.18	42.0%	25.9%	242	13.3	9.5
Male	734	81.9%	3.13	38.7%	22.6%	235	13.7	9.4
<b>Ethnicity</b>								
African Am.	12	1.3%	2.72	25.0%	0.0%	229	12.3	9.4
Asian	346	38.6%	3.06	41.3%	16.2%	238	13.9	9.4
Mexican Am.	50	5.6%	2.91	30.0%	6.0%	235	15.4	9.5
Filipino	28	3.1%	3.05	39.3%	10.7%	232	13.5	11.0
Latino	17	1.9%	3.20	47.1%	17.6%	235	13.0	8.5
Native Am.	1	0.1%	3.14	100.0%	0.0%	225	--	--
Caucasian	192	21.4%	3.10	40.6%	19.3%	233	13.9	10.2
Other	250	27.9%	3.34	37.2%	42.4%	238	12.7	8.7
<b>College</b>								
Revelle	126	14.1%	3.09	36.5%	22.2%	243	13.7	10.7
Muir	119	13.3%	3.16	32.8%	30.3%	238	13.3	8.9
Marshall	150	16.7%	3.14	49.3%	18.0%	232	13.3	9.7
Warren	230	25.7%	3.16	40.0%	24.3%	232	13.3	8.7
Roosevelt	89	9.9%	3.11	32.6%	24.7%	243	13.8	10.3
Sixth	182	20.3%	3.13	39.6%	21.4%	236	14.1	9.1
<b>School Type</b>								
High School	585	65.3%	3.17	41.4%	24.8%	237	13.6	--
2yr College	295	32.9%	3.06	33.6%	20.3%	235	--	9.5
4yr College/Univ.	16	1.8%	3.26	68.8%	18.8%	243	--	--
Unknown	0	0.0%	--	--	--	--	--	--
<b>First Generation College Status</b>								
First Generation	249	27.8%	3.05	36.9%	16.5%	235	13.9	9.6
Not First Generation	647	72.2%	3.17	40.2%	25.8%	237	13.5	9.4
<b>Income</b>								
High: > \$98,401	235	26.2%	3.22	39.6%	30.6%	237	13.2	9.9
Medium High: \$65,601 - \$98,400	81	9.0%	3.08	44.4%	16.0%	238	13.5	10.3
Medium Low: \$32,801 - \$65,600	143	16.0%	3.12	41.3%	21.0%	236	13.7	9.1
Low: < \$32,800	182	20.3%	3.02	34.6%	15.9%	234	13.9	9.9
Missing/Undeclared	255	28.5%	3.17	39.6%	25.1%	237	13.9	9.0
<b>Total Engineering</b>	896	100.0%	3.14	39.3%	23.2%	236	13.6	9.5

\* Five or fewer cases.

## Bachelor Degrees in Engineering: Trends Profile - 2001/2002 to 2010/2011

Student Characteristics	N		Academic Profile				Time-to-Degree	
	N	%	GPA Mean	% GPA 3.0 - 3.5	% GPA ≥ 3.5	Units Mean	Freshmen Mean	C.C. Transfer Mean
<b>Award Year</b>								
2010/2011	818	100.0%	3.13	41%	21%	236	13.6	9.7
2009/2010	756	100.0%	3.18	41%	26%	236	13.4	10.3
2008/2009	747	100.0%	3.11	40%	21%	236	13.8	10.2
2007/2008	763	100.0%	3.12	40%	20%	235	13.7	10.2
2006/2007	814	100.0%	3.11	38%	21%	234	13.9	9.7
2005/2006	933	100.0%	3.11	38%	20%	232	13.7	9.6
2004/2005	998	100.0%	3.14	41%	22%	230	13.4	9.3
2003/2004	654	100.0%	3.10	40%	19%	228	13.9	10.0
2002/2003	674	100.0%	3.11	38%	21%	227	13.9	9.8
2001/2002	563	100.0%	3.08	42%	16%	225	13.9	9.8

## Profile of Bachelor Degree Recipients Majoring in Science and Math: 2011/2012



Student Characteristics			Academic Profile				Time-to-Degree	
	N	%	GPA Mean	% GPA 3.0 - 3.5	% GPA ≥ 3.5	Units Mean	Freshmen Mean	C.C. Transfer Mean
<b>Gender</b>								
Female	192	46.9%	3.11	40.6%	20.3%	224	13.1	8.5
Male	217	53.1%	3.16	39.2%	25.3%	226	13.3	8.6
<b>Ethnicity</b>								
African Am.	0	0.0%	--	--	--	--	--	--
Asian	164	40.1%	3.07	45.1%	14.6%	225	13.2	8.5
Mexican Am.	27	6.6%	2.80	18.5%	7.4%	224	16.2	7.9
Filipino	19	4.6%	3.11	52.6%	15.8%	220	12.8	7.5
Latino	7	1.7%	3.22	42.9%	28.6%	209	13.0	10.0
Native Am.	0	0.0%	--	--	--	--	--	--
Caucasian	105	25.7%	3.23	39.0%	29.5%	225	12.7	8.4
Other	87	21.3%	3.27	34.5%	36.8%	227	12.9	9.1
<b>College</b>								
Revelle	94	23.0%	3.11	35.1%	21.3%	226	13.2	9.4
Muir	89	21.8%	3.24	44.9%	29.2%	226	12.7	7.9
Marshall	69	16.9%	3.20	39.1%	29.0%	220	12.7	9.3
Warren	59	14.4%	3.07	33.9%	20.3%	223	13.8	7.6
Roosevelt	45	11.0%	3.08	46.7%	15.6%	225	13.8	8.0
Sixth	53	13.0%	3.06	41.5%	17.0%	229	13.6	8.3
<b>School Type</b>								
High School	280	68.5%	3.19	42.5%	26.1%	229	13.2	--
2yr College	119	29.1%	3.00	32.8%	15.1%	216	--	8.6
4yr College/Univ.	9	2.2%	3.25	55.6%	22.2%	228	--	--
Unknown	1	0.2%	3.90	0.0%	100.0%	180	--	--
<b>First Generation College Status</b>								
First Generation	126	30.8%	3.08	36.5%	19.0%	224	13.8	7.9
Not First Generation	283	69.2%	3.16	41.3%	24.7%	225	12.9	9.0
<b>Income</b>								
High: > \$98,401	98	24.0%	3.24	50.0%	25.5%	223	12.5	9.0
Medium High: \$65,601 - \$98,400	42	10.3%	3.21	31.0%	33.3%	228	13.6	8.4
Medium Low: \$32,801 - \$65,600	66	16.1%	3.07	37.9%	18.2%	229	13.4	10.0
Low: < \$32,800	88	21.5%	3.04	37.5%	15.9%	224	13.7	7.9
Missing/Undeclared	115	28.1%	3.14	37.4%	25.2%	223	13.1	8.4
<b>Total Science/Math</b>	<b>409</b>	<b>100.0%</b>	<b>3.14</b>	<b>39.9%</b>	<b>23.0%</b>	<b>225</b>	<b>13.2</b>	<b>8.6</b>

The majority of science/math degrees were awarded to males (53%).

The largest proportion of science/math degrees were awarded by Revelle College (23%) followed closely by Muir College (22%).

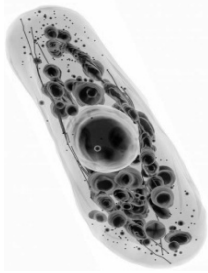
Approximately, 63% of science/math majors graduated with a GPA of 'B' or higher; twenty-three percent graduated with a GPA of 'B+' or higher.

\* Five or fewer cases.

## Bachelor Degrees in Science and Math: Trends Profile - 2001/2002 to 2010/2011

Student Characteristics			Academic Profile				Time-to-Degree	
	N	%	GPA Mean	% GPA 3.0 - 3.5	% GPA ≥ 3.5	Units Mean	Freshmen Mean	C.C. Transfer Mean
<b>Award Year</b>								
2010/2011	413	100.0%	3.10	39%	23%	226	13.4	8.8
2009/2010	368	100.0%	3.17	39%	26%	220	12.9	8.5
2008/2009	395	100.0%	3.10	41%	20%	219	13.6	8.2
2007/2008	360	100.0%	3.10	38%	24%	219	13.4	8.5
2006/2007	339	100.0%	3.07	40%	20%	217	13.3	8.4
2005/2006	310	100.0%	3.15	41%	24%	218	13.1	8.4
2004/2005	327	100.0%	3.10	36%	24%	220	13.5	8.7
2003/2004	259	100.0%	3.08	37%	22%	216	13.5	8.4
2002/2003	252	100.0%	3.08	33%	23%	214	13.4	8.4
2001/2002	242	100.0%	3.08	38%	21%	215	13.2	9.6

## Profile of Bachelor Degree Recipients Majoring in Biology: 2011/2012



Student Characteristics	N		Academic Profile				Time-to-Degree	
	N	%	GPA Mean	% GPA 3.0 - 3.5	% GPA ≥ 3.5	Units Mean	Freshmen Mean	C.C. Transfer Mean
<b>Gender</b>								
Female	880	59.5%	3.13	39.7%	21.9%	217	12.8	8.3
Male	598	40.5%	3.18	37.5%	28.4%	219	13.0	8.3
<b>Ethnicity</b>								
African Am.	17	1.2%	3.02	41.2%	11.8%	224	13.6	8.8
Asian	639	43.2%	3.08	40.1%	17.4%	218	12.9	8.4
Mexican Am.	84	5.7%	2.91	23.8%	11.9%	213	13.8	8.5
Filipino	70	4.7%	2.85	18.6%	10.0%	214	13.3	9.1
Latino	16	1.1%	3.02	43.8%	6.3%	216	13.1	7.3
Native Am.	3	0.2%	3.33	33.3%	33.3%	192	12.0	6.0
Caucasian	229	15.5%	3.15	45.9%	21.8%	210	12.5	8.0
Other	420	28.4%	3.36	39.0%	43.1%	223	12.7	8.1
<b>College</b>								
Revelle	399	27.0%	3.13	34.8%	24.3%	221	12.8	8.4
Muir	264	17.9%	3.22	36.7%	32.2%	218	12.7	8.0
Marshall	258	17.5%	3.18	40.7%	27.5%	211	12.8	7.5
Warren	229	15.5%	3.15	43.2%	22.3%	217	12.7	8.6
Roosevelt	162	11.0%	3.11	41.4%	19.8%	222	13.0	9.3
Sixth	166	11.2%	3.06	39.8%	16.3%	218	13.2	7.9
<b>School Type</b>								
High School	1,089	73.7%	3.18	40.4%	26.5%	220	12.9	--
2yr College	369	25.0%	3.03	32.0%	19.2%	210	--	8.3
4yr College/Univ.	19	1.3%	3.21	73.7%	15.8%	216	--	--
Unknown	1	0.1%	3.38	100.0%	0.0%	232	--	--
<b>First Generation College Status</b>								
First Generation	416	28.1%	3.03	35.3%	17.3%	217	13.2	8.3
Not First Generation	1,062	71.9%	3.19	40.1%	27.4%	218	12.7	8.3
<b>Income</b>								
High: > \$98,401	384	26.0%	3.23	41.1%	30.7%	215	12.4	8.1
Medium High: \$65,601 - \$98,400	163	11.0%	3.16	34.4%	26.4%	216	12.5	8.0
Medium Low: \$32,801 - \$65,600	297	20.1%	3.07	39.7%	16.8%	219	13.3	8.5
Low: < \$32,800	323	21.9%	3.07	37.2%	19.5%	221	13.4	8.4
Missing/Undeclared	311	21.0%	3.18	38.9%	28.6%	217	12.5	8.3
<b>Total Biology</b>	1,478	100.0%	3.15	38.8%	24.6%	218	12.9	8.3

\* Five or fewer cases.

## Bachelor Degrees in Biology: Trends Profile - 2001/2002 to 2010/2011

Student Characteristics	N		Academic Profile				Time-to-Degree	
	N	%	GPA Mean	% GPA 3.0 - 3.5	% GPA ≥ 3.5	Units Mean	Freshmen Mean	C.C. Transfer Mean
<b>Award Year</b>								
2010/2011	1,483	100.0%	3.15	41%	24%	218	12.9	8.4
2009/2010	1,268	100.0%	3.17	42%	25%	218	12.8	8.3
2008/2009	1,173	100.0%	3.13	40%	23%	215	12.9	7.9
2007/2008	1,113	100.0%	3.15	39%	24%	215	12.8	7.9
2006/2007	939	100.0%	3.17	38%	27%	215	12.8	8.1
2005/2006	906	100.0%	3.17	37%	27%	214	12.9	8.0
2004/2005	752	100.0%	3.14	39%	25%	213	12.9	8.6
2003/2004	661	100.0%	3.12	35%	25%	213	13.2	8.6
2002/2003	742	100.0%	3.13	39%	24%	211	13.2	8.6
2001/2002	715	100.0%	3.11	40%	22%	210	13.3	8.9

The majority of biology degrees were awarded to females (60%).

Revelle College awarded the largest proportion (27%) of biology degrees.

Approximately, 64% of biology majors graduated with a GPA of 'B' or higher; twenty-five percent graduated with a GPA of 'B+' or higher.

## Profile of Bachelor Degree Recipients Majoring in the Social Sciences: 2011/2012



Student Characteristics	N		Academic Profile				Time-to-Degree	
			GPA Mean	% GPA 3.0 - 3.5	% GPA ≥ 3.5	Units Mean	Freshmen Mean	C.C. Transfer Mean
<b>Gender</b>								
Female	1,774	58.5%	3.17	42.4%	25.3%	204	12.6	6.9
Male	1,260	41.5%	3.07	36.7%	20.6%	203	13.4	7.3
<b>Ethnicity</b>								
African Am.	73	2.4%	3.05	45.2%	13.7%	207	13.6	7.1
Asian	1,273	42.0%	3.09	39.1%	20.4%	204	12.9	6.9
Mexican Am.	320	10.5%	3.02	40.9%	13.4%	202	13.5	7.2
Filipino	95	3.1%	3.00	38.9%	12.6%	201	13.0	7.6
Latino	94	3.1%	3.08	42.6%	14.9%	206	13.0	7.8
Native Am.	19	0.6%	3.20	36.8%	26.3%	192	11.8	7.8
Caucasian	784	25.8%	3.24	42.0%	31.1%	202	12.4	7.2
Other	376	12.4%	3.20	37.0%	31.9%	208	12.8	7.3
<b>College</b>								
Revelle	287	9.5%	2.98	41.5%	11.1%	211	13.3	8.8
Muir	569	18.8%	3.17	39.0%	26.4%	205	12.7	7.0
Marshall	693	22.8%	3.14	40.5%	23.2%	199	12.8	6.8
Warren	440	14.5%	3.12	40.9%	22.7%	202	12.7	7.1
Roosevelt	635	20.9%	3.18	36.7%	29.8%	207	12.7	7.3
Sixth	410	13.5%	3.11	43.7%	18.5%	201	13.2	6.9
<b>School Type</b>								
High School	1,670	55.0%	3.17	41.8%	25.9%	209	12.9	--
2yr College	1,287	42.4%	3.07	36.8%	20.3%	197	--	7.1
4yr College/Univ.	71	2.3%	3.25	57.7%	19.7%	210	--	--
Unknown	6	0.2%	2.73	16.7%	0.0%	198	--	--
<b>First Generation College Status</b>								
First Generation	998	32.9%	3.05	40.5%	16.3%	203	13.1	7.3
Not First Generation	2,036	67.1%	3.17	39.8%	26.8%	204	12.7	7.0
<b>Income</b>								
High: > \$98,401	718	23.7%	3.21	35.9%	30.9%	203	12.4	6.9
Medium High: \$65,601 - \$98,400	319	10.5%	3.11	41.7%	21.3%	205	12.5	7.5
Medium Low: \$32,801 - \$65,600	571	18.8%	3.09	44.8%	17.9%	205	12.9	7.3
Low: < \$32,800	652	21.5%	3.03	39.1%	15.3%	204	13.4	7.4
Missing/Undeclared	774	25.5%	3.19	40.3%	27.9%	203	12.8	7.0
<b>Total Social Sciences</b>	<b>3,034</b>	<b>100.0%</b>	<b>3.13</b>	<b>40.0%</b>	<b>23.3%</b>	<b>204</b>	<b>12.9</b>	<b>7.1</b>

\* Five or fewer cases.

### Bachelor Degrees in Social Sciences: Trends Profile - 2001/2002 to 2010/2011

Student Characteristics	N		Academic Profile				Time-to-Degree	
			GPA Mean	% GPA 3.0 - 3.5	% GPA ≥ 3.5	Units Mean	Freshmen Mean	C.C. Transfer Mean
<b>Award Year</b>								
2010/2011	2,906	100.0%	3.12	41%	21%	203	12.8	7.1
2009/2010	2,816	100.0%	3.11	40%	22%	203	12.6	7.4
2008/2009	2,499	100.0%	3.10	40%	21%	202	12.8	7.2
2007/2008	2,577	100.0%	3.12	43%	20%	201	12.7	7.5
2006/2007	2,446	100.0%	3.12	42%	21%	201	12.8	7.0
2005/2006	2,486	100.0%	3.15	42%	22%	200	12.6	7.3
2004/2005	2,406	100.0%	3.12	43%	20%	199	12.8	7.1
2003/2004	2,022	100.0%	3.14	42%	22%	199	13.0	7.3
2002/2003	2,051	100.0%	3.10	42%	19%	198	13.0	7.5
2001/2002	1,916	100.0%	3.09	45%	17%	197	13.0	7.7

The majority of social science degree recipients were female (59%).

The average grade point average for the 2011/2012 social science degree recipients was 3.13.

Approximately, 63% of social science majors graduated with a GPA of 3.0 or higher; twenty-three percent graduated with a GPA of 3.5 or higher.



*Degrees Conferred* is an annual publication of the  
Office of Student Research & Information,  
Student Affairs, 858-534-2382.  
This document is also available on the  
World Wide Web at:  
[studentresearch.ucsd.edu](http://studentresearch.ucsd.edu)